

**Free Contents****The current situation of the evacuees affected  
by the Great East Japan Earthquake****The number of evacuees in Iwate prefecture, Miyagi  
prefecture and Fukushima prefecture**

Since the Great East Japan Earthquake has stricken, there are significant numbers of the people from the affected areas who have been forced to evacuate.

This report shows the number of evacuees in each prefecture. The data is provided from the publically offered sources including the Cabinet Office of Japan.

**1. Iwate Prefecture**

Approximately 50,000 evacuees are reported in Iwate prefecture and it took 7 months to completely close all the emergency shelter locations since the occurrence of the earthquake due to the vital needs.

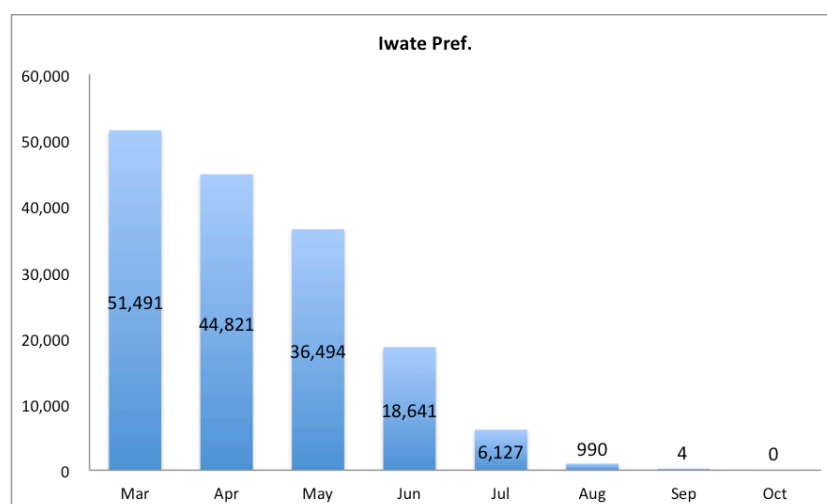


fig.1 The number of evacuees in Iwate

## 2. Miyagi Prefecture

In Miyagi prefecture, there are more than 320,000 evacuees have been reported; especially around the severely affected by the tsunami area such as Ishinomaki city, Kesennuma city, and Higashi-matsushima city are showing the significant numbers.

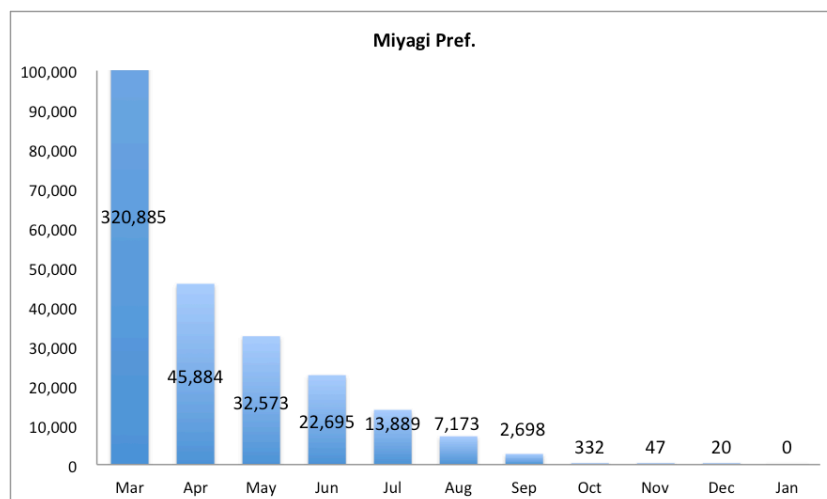


fig.2 The number of evacuees in Miyagi

## 3. Fukushima Prefecture

In Fukushima prefecture, there are still nearly 30,000 evacuees have been living in within the prefecture shelters. There are more than 60,000 evacuees are reported living in outside the prefecture shelters. There are significant numbers of evacuees are still unable to restore their lives and forced to live in the temporal shelters.

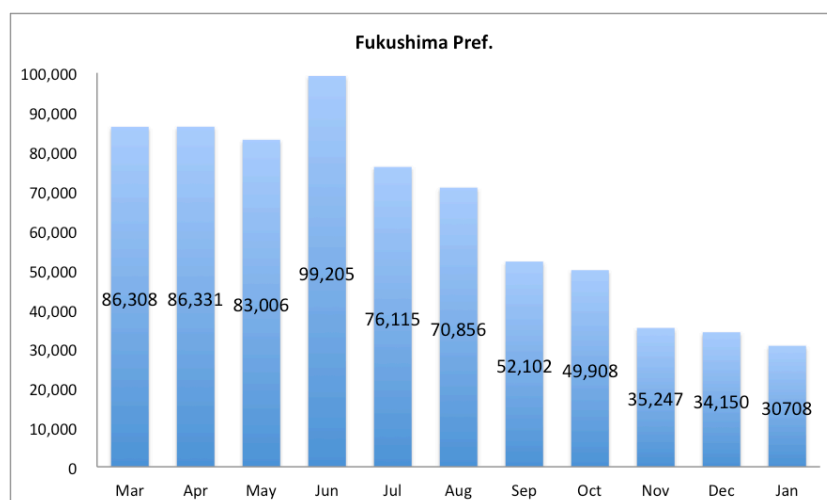


fig.3 The number of evacuees in Fukushima